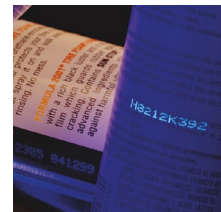
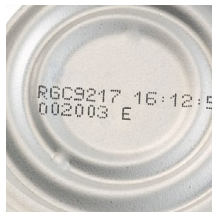
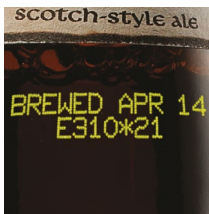




Continuous Inkjet

Videojet 1000 Line print sample guide



Videojet 1000 Line print sample guide

Font/Lines	Max. line speed for samples as shown (m/minute)				70 Micron (μ) Nozzle Print Sample
	1220	1520/1550	1600 Series*	1710	
4x7 Single	N/A	N/A	293	244	ABCDEFGH 12345 4X7
5x5 Single	162	279	279	271	ABCDEFGH 12345 5X5
5x7 Single	139	244	244	203	ABCDEFGH 12345 5X7
7x9 Single	70 (70μ) 72 (60μ)	108	163	163	ABCDEFGH 12345 7X9
9x12 Single	78	78	78	79	ABCDEFGH 12345 9X12
10x16 Single	59	59	93	77	ABCDEFGH 12345
16x24 Single	29	29	29	24	ABCDEFGH 1234
25x34 Single	16	16	16	14	ABCDE 12
5x5 Twin	59	78	115	96	ABCDEFGHIJKLMN 1234567890 5X5TL
4x7 Twin	N/A	N/A	146	122	ABCDEFGHIJKLMN 1234567890 4X7TL
5x7 Twin	59	61 (70μ) 81 (60μ)	122	102	ABCDEFGHIJKLMN 1234567890 5X7TL
7x9 Twin	29	36 (70μ) 38 (60μ)	70	58	ABCDEFGHIJKLMN 1234567890 7X9TL
9x12 Twin	26	26	26	21	ABCDEFGHIJKLMN 1234567890 9X12TL
10x16 Twin	16	16	16	14	ABCDEFGHIJKLMN 1234567890 10X16TL
5x5 Three	29	36	36 (70μ) 38 (60μ)	32	ABCDEFGHIJKL 1234567890 5X5 TRI LINE
4x7 Three	N/A	N/A	81	67	ABCDEFGHIJKL 1234567890 4X7 TRI LINE
5x7 Three	27	27	67	56	ABCDEFGHIJKL 1234567890 5X7 TRI LINE
7x9 Three	16	16	16 (70μ) 37 (60μ)	31	ABCDEFGHIJKL 1234567890 7X9 TRI LINE
5x5 Four	26	26	26	21	ABCDEFGHIJKLMN 1234567890 4 LINES OF PRINT 5X5 QUAD LINE
4x7 Four	N/A	N/A	20	16	ABCDEFGHIJKLMN 1234567890 4 LINES OF PRINT 4X7 QUAD LINE
5x7 Four	16	16	16	14	ABCDEFGHIJKLMN 1234567890 4 LINES OF PRINT 5X7 QUAD LINE
5x5 Five	16	16	16	14	ABCDEFGHIJKLMN 1234567890 5 LINES OF PRINT 5X5 FIVE LINE 70 MICRON NOZZLE

N/A = Not Available *1600 Series includes 1620, 1650 and 1610 Dual Head models.

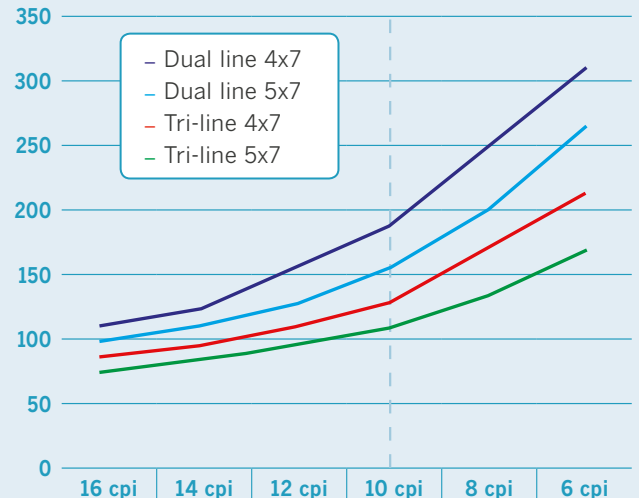
Videojet 1000 Line print sample guide

60 Micron (μ) Nozzle Print Sample
ABCDEFGFG 12345 4X7
ABCDEFGFG 12345 5X5
ABCDEFGFG 12345 5X7
ABCDEFGFG 12345 7X9
ABCDEFGFG 12345 9X12
ABCDEFGFG 12345
ABCDEFGFG 123
ABCDE 12
ABCDEFGHIJKLMN 1234567890 5X5 TL
ABCDEFGHIJKLMN 1234567890 4X7 TL
ABCDEFGHIJKLMN 1234567890 5X7 TL
ABCDEFGHIJKLMN 1234567890 7X9 TL
ABCDEFGHIJKLMN 1234567890 9X12 TL
ABCDEFGHIJKLMNO 1234567890 10X16 TL
ABCDEFGHIJKL 1234567890 5X5 TRI LINE
ABCDEFGHIJKL 1234567890 4X7 TRI LINE
ABCDEFGHIJKL 1234567890 5X7 TRI LINE
ABCDEFGHIJKL 1234567890 7X9 TRI LINE
ABCDEFGHIJKLMN 1234567890 4 LINES OF PRINT 5X5 QUAD LINE
ABCDEFGHIJKLMN 1234567890 4 LINES OF PRINT 4X7 QUAD LINE
ABCDEFGHIJKLMN 1234567890 4 LINES OF PRINT 5X7 QUAD LINE
ABCDEFGHIJKLMN 1234567890 5 LINES OF PRINT 5X5 FIVE LINE 60 MICRON NOZZLE

UHS *	Max. line speed for samples as shown (m/minute)	
	1620/1650 UHS	50 Micron (μ) Nozzle Print Sample
Font/Lines		
4x5 Single	508	ABCDEFGFG 12345 4X5
5x5 Single	423	ABCDEFGFG 12345 5X5
4x7 Single	339	ABCDEFGFG 12345 4X7
5x7 Single	282	ABCDEFGFG 12345 5X7
7x9 Single	254	ABCDEFGFG 12345 7X
10x16 Single	121	ABCDEFGFG 1234
4x5 Twin	254	ABCDEFGHIJKLMN 1234567890 4X5 TL
5x5 Twin	212	ABCDEFGHIJKLMN 1234567890 5X5 TL
4x7 Twin	191	ABCDEFGHIJKLMN 1234567890 4X7 TL
5x7 Twin	158	ABCDEFGHIJKLMN 1234567890 5X7 TL
7x9 Twin	91	ABCDEFGHIJKLMN 1234567890 7X9 TL
4x5 Three	179	ABCDEFGHIJKL 1234567890 4X5 TRI LINE
5x5 Three	149	ABCDEFGHIJKL 1234567890 5X5 TRI LINE
4x7 Three	132	ABCDEFGHIJKL 1234567890 4X7 TRI LINE
5x7 Three	110	ABCDEFGHIJK 1234567890 5X7 TRI LINE

Linear print speed and character pitch are interrelated on all CIJ printers. The Videojet UHS speeds detailed in the table above are rated for 10 characters per inch. The printers maximum speed is either faster or slower based upon the chosen character pitch.

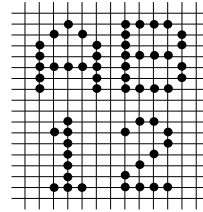
Speed is shown in (meters per minute)



*Additional font options available

Clear, consistent codes

The 1000 Line produces the sharpest codes in the industry. It precisely places every drop, so marks are always clear and easy to read. Dynamic Calibration automatically maintains consistent print quality, even if environmental conditions change.



The Videojet 1000 Line printers are all available with the option of either a 50 micron, 60 micron or 70 micron nozzle inside the printhead. The 70 micron nozzle will benefit customers who require higher contrast or bolder characters, better visible resolution and greater throw distance. The 60 micron nozzle is well-suited for applications that require stronger character definition (ie. Asian and Arabic fonts), smaller print such as that seen on pharmaceutical and cosmetic products and additional spacing between multi-line prints. The 50 micron nozzle, and its specifically paired inks, are designed for high speed applications that require more drops per second and therefore use smaller drops. This nozzle size is also used to get smaller characters and/or more characters on the same space.

ABCDEFGFG

70 micron nozzle

ABCDEFGFG

60 micron nozzle

ABCDEFGFG

50 micron nozzle

Variety of ink choices to match your application

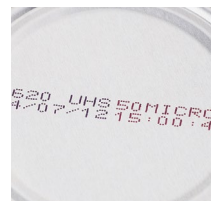
Dye based inks

Videojet offers a variety of ink colors to print on light substrates. Available in black, red, blue and green.



Dye based speciality inks

Some formulations have special characteristics like color change under retort process, optimized performance for high speeds/small nozzle size, alkali washable, food grade and visible under UV light.



Retort process



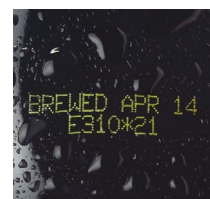
Food grade



Ultra high speed

Pigmented inks for high contrast applications

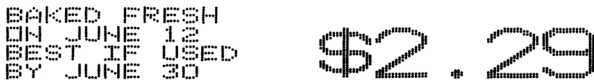


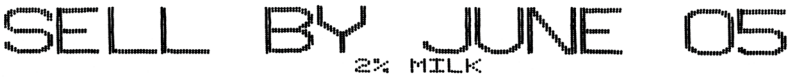
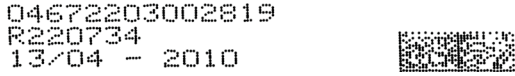




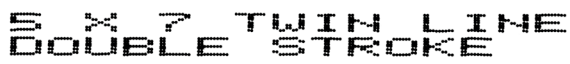
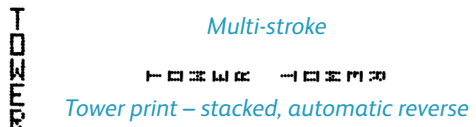
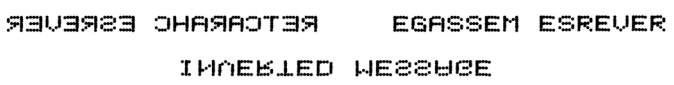
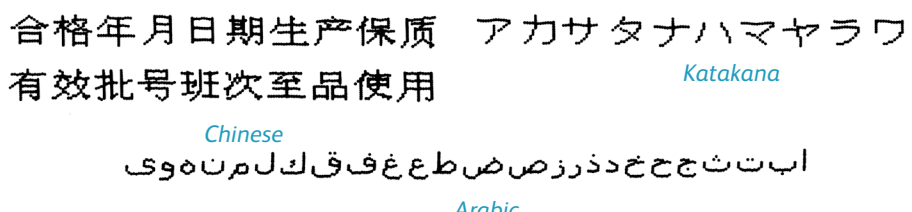

Videojet offers pigmented fluids ideal for applications requiring high contrast, bright codes on dark or difficult to mark surfaces. These inks provide easily readable codes for applications in the parts marking, extrusion, wire and cable, beverage, electronics, food and personal care markets.



These inks operate in the Videojet 1710 model and deliver high print quality, excellent adhesion and superior contrast.

Videojet 1000 Line print sample guide

Infinite possibilities

Description	Print Sample
Four line 5x5 with 16x24 single line	 <p>BAKED FRESH ON JUNE 12 BEST IF USED BY JUNE 30</p> <p>\$2.29</p>
Logo with four line 5x5	 <p>F 85-000-00 CEE</p> <p>03/04/10 LOT 1324DE 10:34:36</p>
9x12 multi-language twin line with 10x16 single line	 <p>此日期前最佳: 02/10/10 BEST IF USED BY: 02/10/10</p>
10x16 single line over 5x7 single line	 <p>SELL BY JUNE 05 2% MILK</p>
Three line 5x7 with 2D DataMatrix	 <p>04672203002819 R220734 13/04 - 2010</p>
UPC-A bar code with 25x34 text	 <p>UPC-A</p>
Unlimited possibilities for mixing fonts in the same message	 <p>UPC-A BAR CODE TEXT 34H</p>
<p>Linear bar codes</p> <p>Wide range of bar codes for automatic identification. UPC A&E; EAN 8 & 13; Code 128 A, B&C; UCC/EAN 128; Code 39; Interleaved 2 of 5</p>	 <p>Code 39 with human readable</p> <p>UPCA</p> <p>Interleaved 2 of 5</p>
<p>2D DataMatrix</p> <p>Wide range of standard 2D and rectangular 2D DataMatrix, including GS1</p>	
<p>Multi-stroke</p> <p>To highlight words or numbers and make codes darker and bolder</p>	 <p>S X 7 TWIN LINE DOUBLE STROKE</p>
<p>Tower print*</p> <p>To emphasize whole message or specific characters</p>	 <p>Multi-stroke</p> <p>TOWER</p> <p>Tower print – stacked, automatic reverse</p>
<p>Inverted/reversed characters</p> <p>Accommodates product lines going any direction and products in various orientations on the production line</p>	 <p>REVERSE CHARACTER EGASSEM ESREVER</p> <p>INVERTED MESSAGE</p>
<p>Unique-character languages</p> <p>American, Arabic, Bulgarian, Chinese, East European, European, Greek, Hebrew, Hungarian, Italian, Japanese, Japanese/Kanji, Japanese/Katakana, Korean, Russian, Simplified Chinese, Scandinavian, Thai, Traditional Chinese, Turkish, Vietnamese</p>	 <p>合格年月日期生产保质 アカサタナハマヤラワ 有效批号班次至品使用 <i>Katakana</i></p> <p><i>Chinese</i></p> <p>ابتتثجحخدذرزسصطعغفقكللمنوهوى <i>Arabic</i></p>
<p>Graphics and logos</p> <p>Create custom logos on PC and upload via USB</p>	 <p>TO OPEN CUT AT LINE</p>

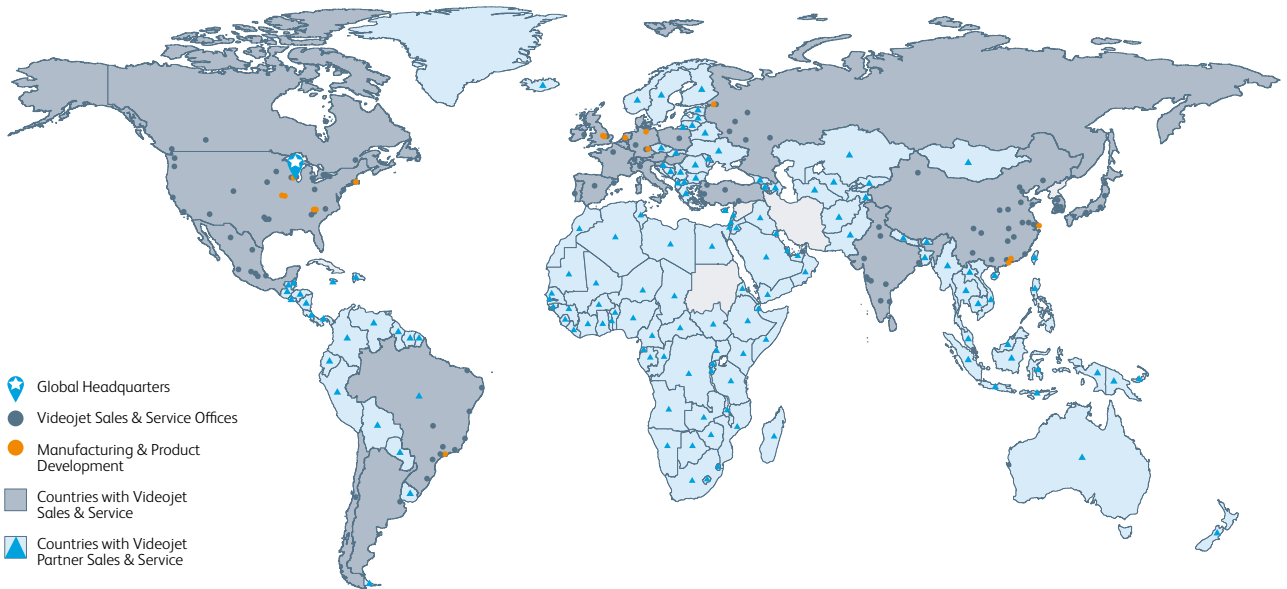
*Only available on 1520, 1620, 1620 UHS & 1720 models

Peace of mind comes as standard

Videojet Technologies is a world-leader in the product identification market, providing in-line printing, coding, and marking products, application specific fluids, and product life cycle services.

Our goal is to partner with our customers in the consumer packaged goods, pharmaceutical, and industrial goods industries to improve their productivity, to protect and grow their brands, and to stay ahead of industry trends and regulations. With our customer application experts and technology leadership in Continuous Inkjet (CIJ), Thermal Inkjet (TIJ), Laser Marking, Thermal Transfer Overprinting (TTO), case coding and labeling, and wide array printing, Videojet has more than 325,000 printers installed worldwide.

Our customers rely on Videojet products to print on over ten billion products daily. Customer sales, application, service and training support is provided by direct operations with over 3,000 team members in 26 countries worldwide. In addition, Videojet's distribution network includes more than 400 distributors and OEMs, serving 135 countries.



Call **800-843-3610**
Email **info@videojet.com**
or visit **www.videojet.com**

Videojet Technologies Inc.
1500 Mittel Blvd. Wood Dale IL 60191 / USA

©2015 Videojet Technologies Inc. — All rights reserved.
Videojet Technologies Inc.'s policy is one of continued product improvement.
We reserve the right to alter design and/or specifications without notice.
TrueType is a registered trademark of Apple Computer, Inc.

Part No. SL000565
pg-1000-line-metric-0815
Printed in U.S.A.

