

LP Mod-Plus Marathon™ Adhesive Applicator

The LP Mod-Plus Marathon™ is an air-operated adhesive applicator with an in-line filter cartridge to prevent particulate matter from obstructing adhesive flow through the nozzle orifice. Its tapered body allows for uninterrupted flow of cases, making it ideal for case erecting and case sealing applications. The LP Marathon's™ screw-on nozzle seat also allows for fast and easy nozzle change.

LP Mod-Plus Marathon™ Applicator:

- Standard in-line filter prevents nozzle clogging.
- Platinum sensors provide optimum temperature control.
- Standard air open/air close module for accurate bead placement.
- Low-Profile design ideal for case erecting and case sealing applications.
- Rotating right angle nozzles can be positioned for optimum pattern placement.

Reliability

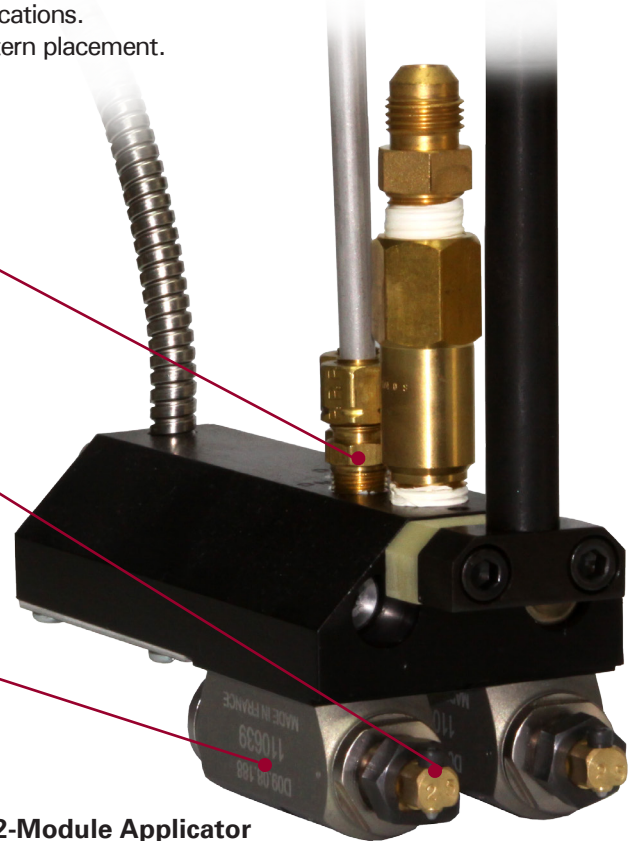
Air open/air close design gives clean, sharp cut-off every time.

Performance

Rotating nozzles offer flexible pattern placement.

Simplicity

Easy-to-remove module body saves time during module changes.



LP Mod-Plus Marathon™ 2-Module Applicator shown with optional right angle nozzles

The Dynatec *Difference*

Air Open/Air Close Design

Over time, adhesive applicator modules that use an air open/spring close system can lose spring tension, resulting in stringing and poor cut-offs. The LP Mod-Plus Marathon™ applicator module is designed to operate as an air open/air close system that does not rely on a spring to close the orifice during operation. The result is both cleaner cut-off and better operation over a

longer operating lifespan. While this feature may be optional on competitive modules, only ITW Dynatec offers this feature standard on the LP Mod-Plus Marathon™ adhesive applicator.

ITW Dynatec LP Mod-Plus Marathon™ Adhesive Applicator

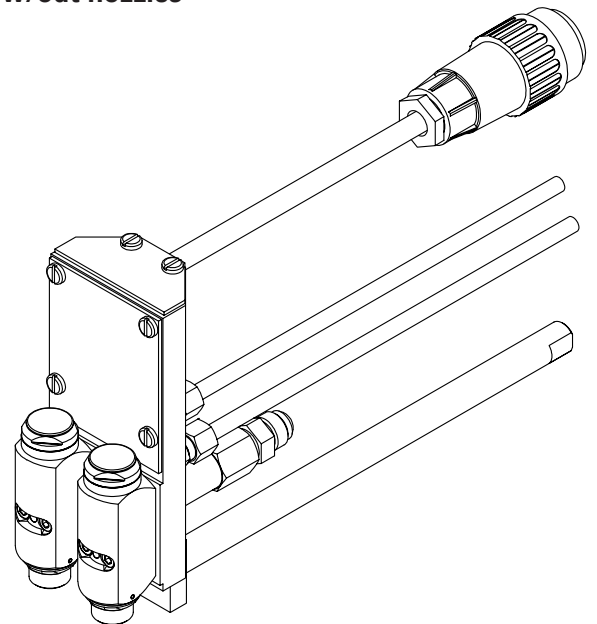
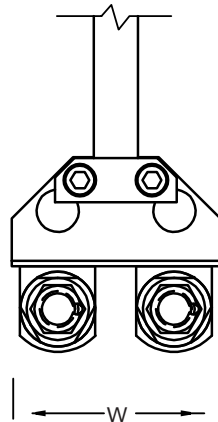
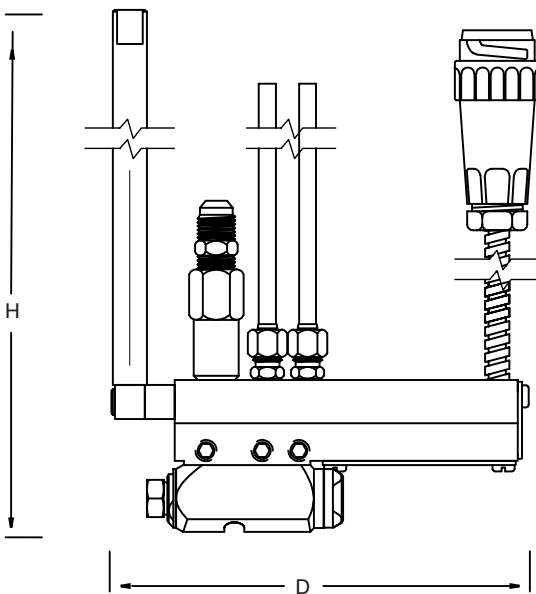
System	LP Mod-Plus Marathon™
Operating Temperature Range	38°C to 218°C (100°F to 425°F)
Minimum Operating Pneumatic Pressure	5 bar (74 psi)
Maximum Operating Pneumatic Pressure	9.7 bar (140 psi)
Minimum Adhesive Pressure	41 bar (600 psi)
Maximum Adhesive Pressure	68 bar (1,000 psi)
Minimum Adhesive Viscosity	None
Maximum Adhesive Viscosity	20,000 cps
Maximum On/Off Cycle Speed	5,000 cycles/minute (400 series MAC® valve)

* Specifications are based on 1,000 cps adhesive

Dimensions	LP Mod-Plus Marathon™
Height (H)	270.4 mm (10.65 in)
Depth (D)	154.5 mm (6.08 in)
Width (W) - 2 Module	60.3 mm (2.37 in)
Width - 4 Module	88.8 mm (3.50 in)



**LP Mod-Plus Marathon™
4-Module Applicator w/out nozzles**



CHINA

ITW Dynatec Suzhou
Unit2, B1 Building
No.9 Weixin Road
SIP, Suzhou, China 215122
Telephone +86.512.6289.0620
Fax +86.512.6289.0621
dynatecsuzhou@itwdynatec.cn

AMERICAS

ITW Dynatec
31 Volunteer Drive
Hendersonville, TN 37075
Telephone 615•824•3634
+1.800.860.6150
Fax +1.615.264.5248
dynatec@itwdynatec.com

JAPAN

ITW Dynatec K.K.
Tsukimura Building 5th Floor
26-11, Nishikamata 7-chome
Ota-ku, Tokyo 144-0051, Japan
Telephone +81.3.5703.5501
Fax +81.3.5703.5505
info@itwdynatec.co.jp

EUROPE, AFRICA & MIDDLE EAST

ITW Dynatec GmbH
Industriestrasse 28
D-40822 Mettmann, Germany
Telephone +49.210.4915.0
Fax +49.210.491.5111
e.mail@itwdynatec.de

ITW Dynatec TenPlus
ZI Croix de Raville
28500 Cherisy, France
Telephone +33(0)2.37.62.56.47
Fax +33(0)2.37.62.56.40
info@itwdynatec.fr