

CrossCoat™ Precision Metering Slot Die

ITW Dynatec's CrossCoat™ is a non-contact, metered slot applicator that produces a precise flow of adhesive for coating applications that require streak-free results. A continuous film is formed from the applicator to the substrate. The surface attraction of the adhesive enables it to be stretched as it is applied to the substrate, producing highly accurate and replicable results. Cross-web accuracies to $\pm 3\%$ can be achieved with a minimum application coat weight of 1gsm at web speeds of 1,000 m/minute or more.

CrossCoat™:

- Cross-web distribution accuracies to $\pm 3\%$.
- Ideal for heat sensitive materials.
- Coat weights as low as 1gsm.
- Coat weight and width changes during production.
- Consistent coating on irregular surfaces.
- Streak-free finish.

Precision

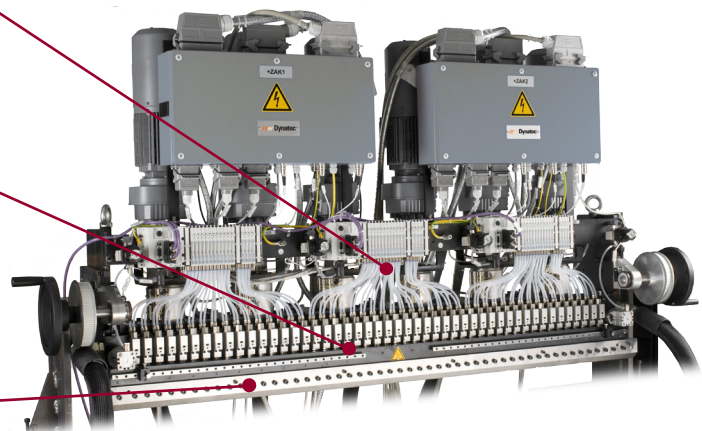
Integrated gear pumps provide exceptional cross-web distribution accuracy to $\pm 3\%$.

Flexibility

Coat weight and coverage width can be easily changed automatically or manually.

Performance

Non-contact application encapsulates surface contaminants instead of trapping them between the die lip and substrate, producing consistent coating performance while minimizing waste.



CrossCoat™ Precision Metering Slot Die

The Dynatec *Difference*

Non-Contact Application

No Heat Memory

Heat sensitive materials such as thin PP and PE film do not come into contact with the die lip, eliminating damage to the film.

Conformity to Irregular Surfaces

Establishing an adhesive film enables 100% coating of fabrics, textured foils, technical textiles and other non-flat surfaces.

Streak-Free Coating

A smooth, clear fluid coating encapsulates substrate contaminants without producing dry lines.

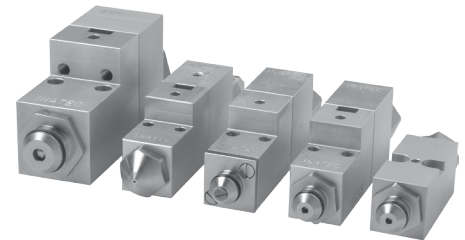
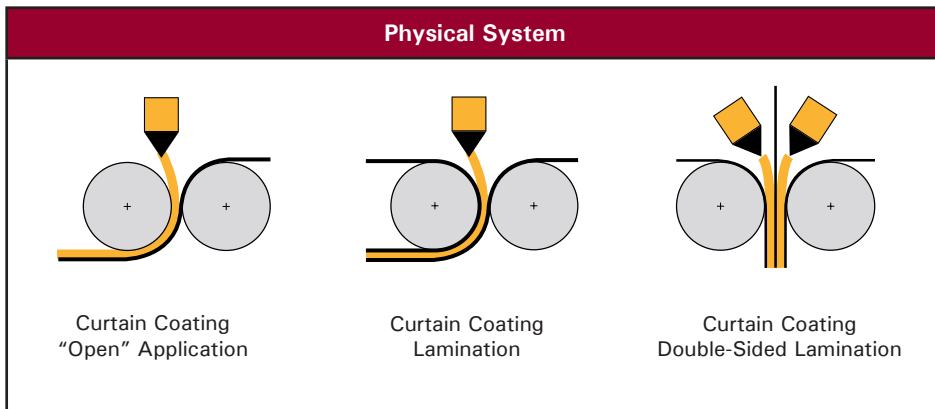
Flexible Coat Weights

Non-contact coating elongates the adhesive until the desired coat weight is achieved. Coat weights from 1 to over 100 gsm are achievable on the fly depending on the adhesive rheology.

Pump Sizes	Pump Output at 1 RPM	Maximum Output at 60 rpm	Minimum Output in lbs/hr	Maximum Output in lbs/hr
0.6cc/rev	4.8cc	288cc	0.63	38.06
1.2cc/rev	9.6cc	576cc	1.27	76.12
2.4cc/rev	19.2cc	1152cc	2.54	152.25
4.8cc/rev	38.4cc	2304cc	5.07	304.50
10cc/rev	90cc	4800cc	10.57	634.36

Physical System	Details
Adhesive Viscosity	1,000 - 200,000 cps*
Maximum Operating Temp.	200° C (425° F)
Pneumatic Pressure	5 to 9 bar (74 to 125 psi)
Adhesive Pressure	7 to 68 bar (100 to 1000 psi)

*Elastomeric properties of adhesive determine feasibility of curtain application viscosity.



Recirculating Modules Prevent Adhesive Degradation



Non-Contact Film Extrusion

CHINA
ITW Dynatec Suzhou
Unit2, B1 Building
No.9 Weixin Road
SIP, Suzhou, China 215122
Telephone +86.512.6289.0620
Fax +86.512.6289.0621
dynatecsuzhou@itwdynatec.cn

AMERICAS
ITW Dynatec
31 Volunteer Drive
Hendersonville, TN 37075
Telephone 615-824-3634
+1.800.860.6150
Fax +1.615.264.5248
dynatec@itwdynatec.com

JAPAN
ITW Dynatec K.K.
Tsukimura Building 5th Floor
26-11, Nishikamata 7-chome
Ota-ku, Tokyo 144-0051, Japan
Telephone +81.3.5703.5501
Fax +81.3.5703.5505
info@itwdynatec.co.jp

EUROPE, AFRICA & MIDDLE EAST
ITW Dynatec GmbH
Industriestrasse 28
D-40822 Mettmann, Germany
Telephone +49.210.4915.0
Fax +49.210.491.5111
e.mail@itwdynatec.de

ITW Dynatec TenPlus
ZI Croix de Raville
28500 Cherisy, France
Telephone +33(0)2.37.62.56.47
Fax +33(0)2.37.62.56.40
info@itwdynatec.fr